



RESIDENCIAL
LAS PALMERAS
RESIPAL



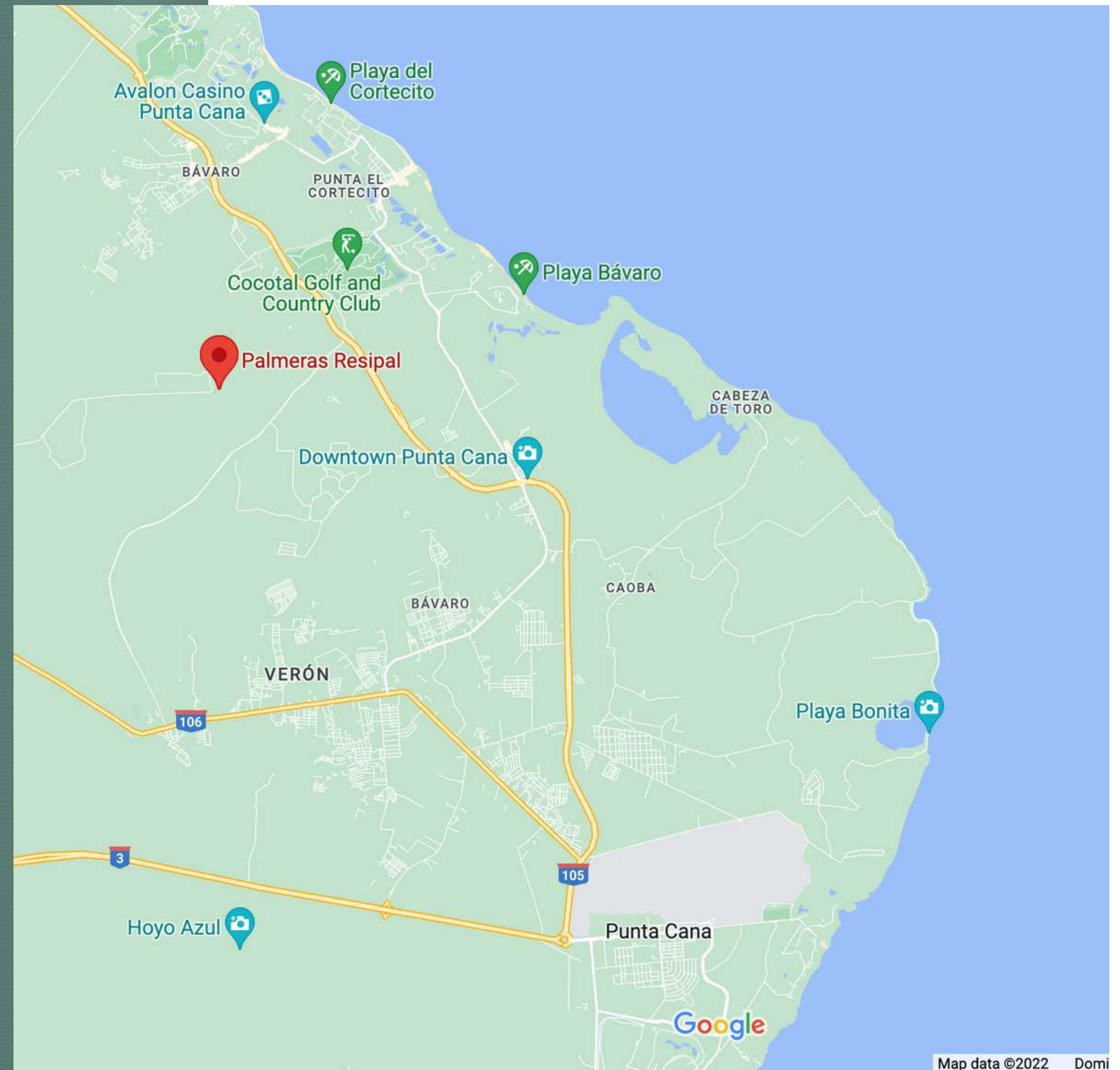
INSPIRED

In the palm trees, the fresh wind intertwines its fine leaves, the sea, and its tranquility. Residencial Palmeras Resipal brings to Punta Cana a fresh and modern concept, to offer its owners a safe and harmonious place based on the safety of families.



LOCATION

A privileged location, in one of the most important residential areas of Punta Cana, just 25 minutes from the International Airport and the BlueMall shopping center.







RESIDENCIAL
LAS PALMERAS
RESIPAL

THE PROJECT

This beautiful and contemporary development will be built in Punta Cana Bávaro, with a very minimalist design where it integrates nature and natural light into all spaces.



RESIDENCIAL
LAS PALMERAS
RESIPAL

AMENITIES



PLAYGROUND AND GAZEBO



NEARBY TO SCHOOLS



SECURITY 24/7



NEARBY TO RESTAURANT

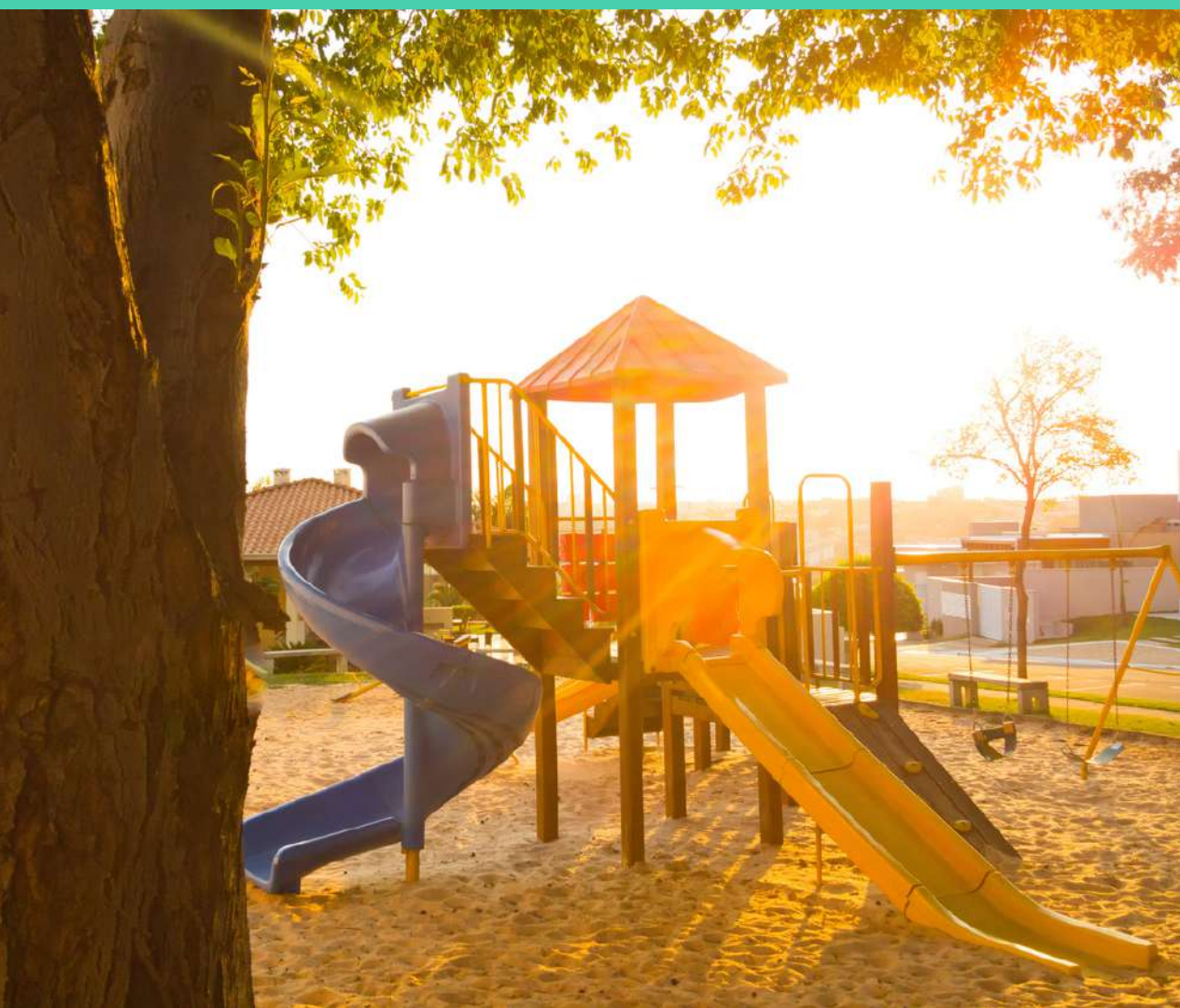


**PICUZZI IN
EACH VILLA**



GYM







RESIDENCIAL
LAS PALMERAS
RESIPAL

Residencial
LAS PALMERAS RESIPAL

SEGURIDAD



COMFORT TAKES ON ANOTHER MEANING...

Feel comfortable experiencing a new sense of comfort by strolling through a modern and pleasant villa where natural light is the center of attraction.

2 and 3- bedroom properties will be your haven of tranquility, surrounded by beautiful nature and modern architecture. Ideal for resting, vacation, or retiring in the beauty of the Caribbean.



110 UNITS



2, 3 - BEDROOMS



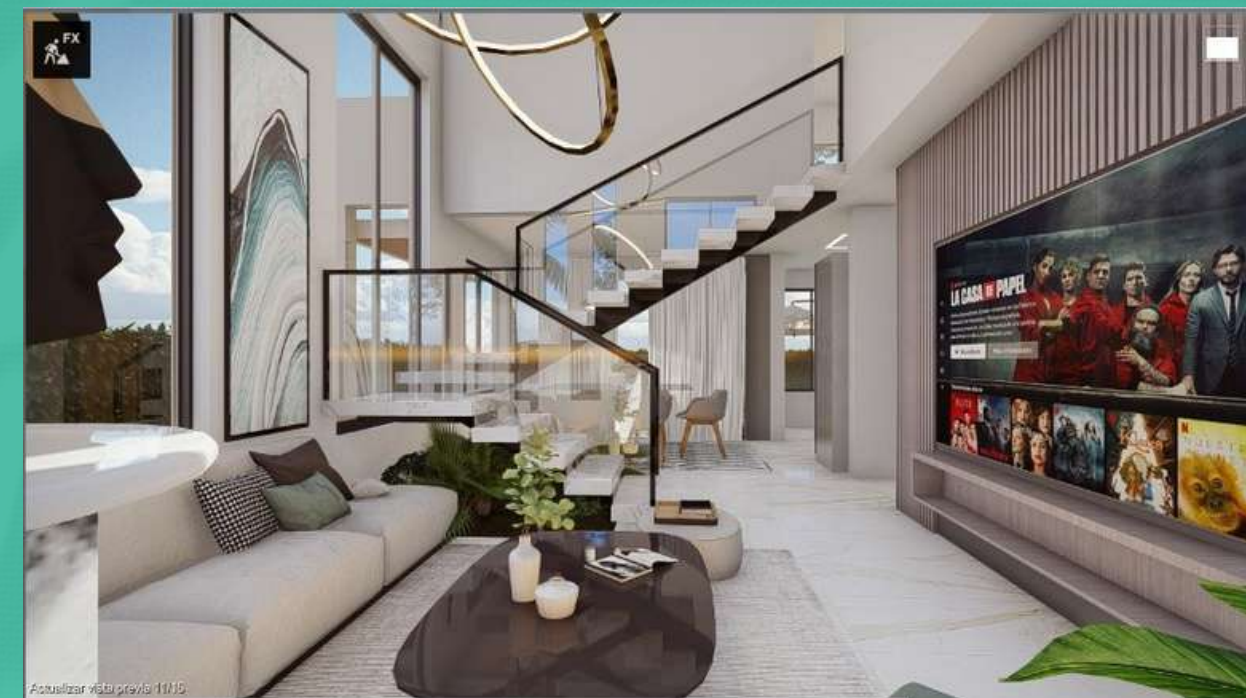
TERRACE

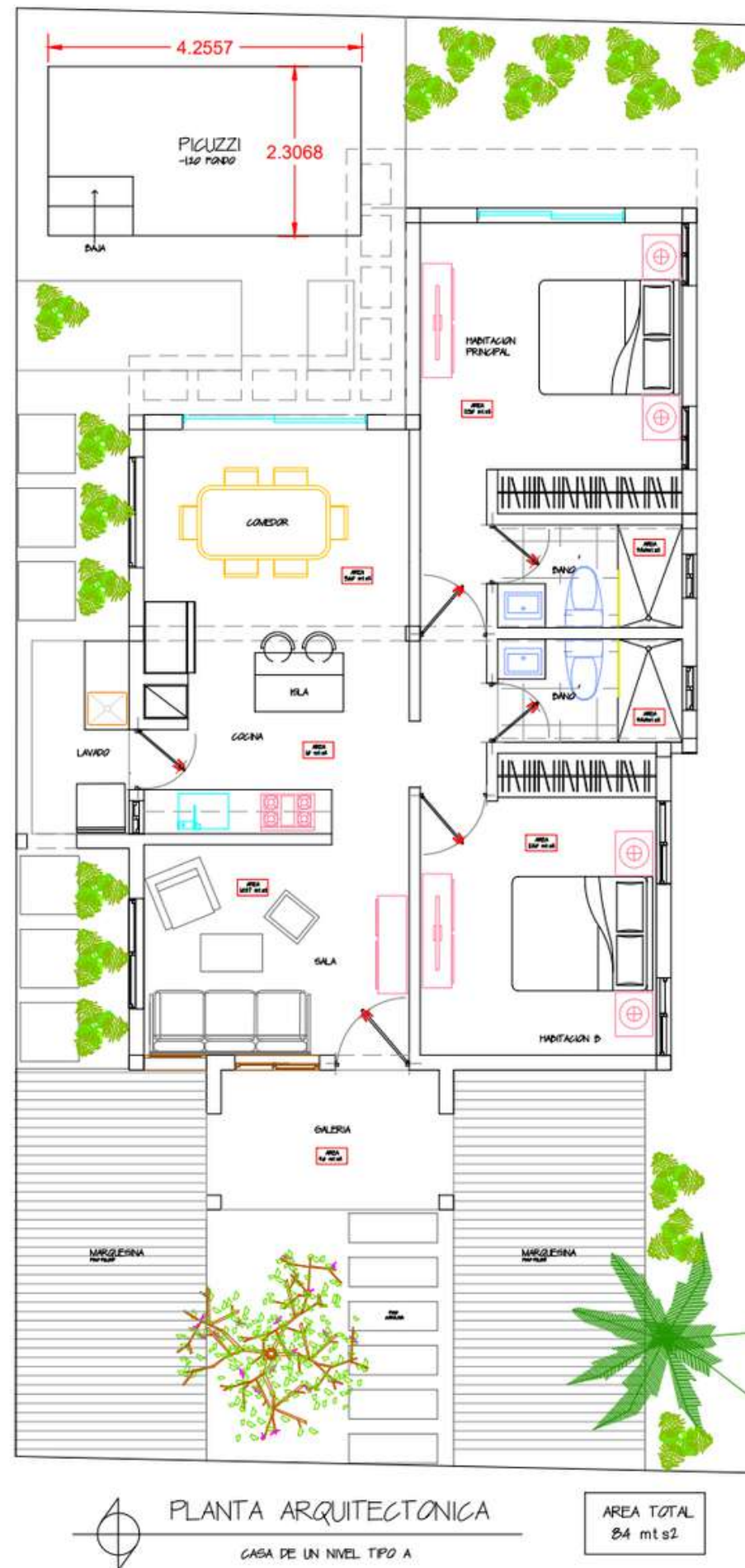


PICUZZI



SECURITY 24/7





2 BEDROOMS

1 LEVEL

M2 CONSTRUCTION

84 M2

M2 LOT

196.32 M2

PICUZZI

4,50 Mt

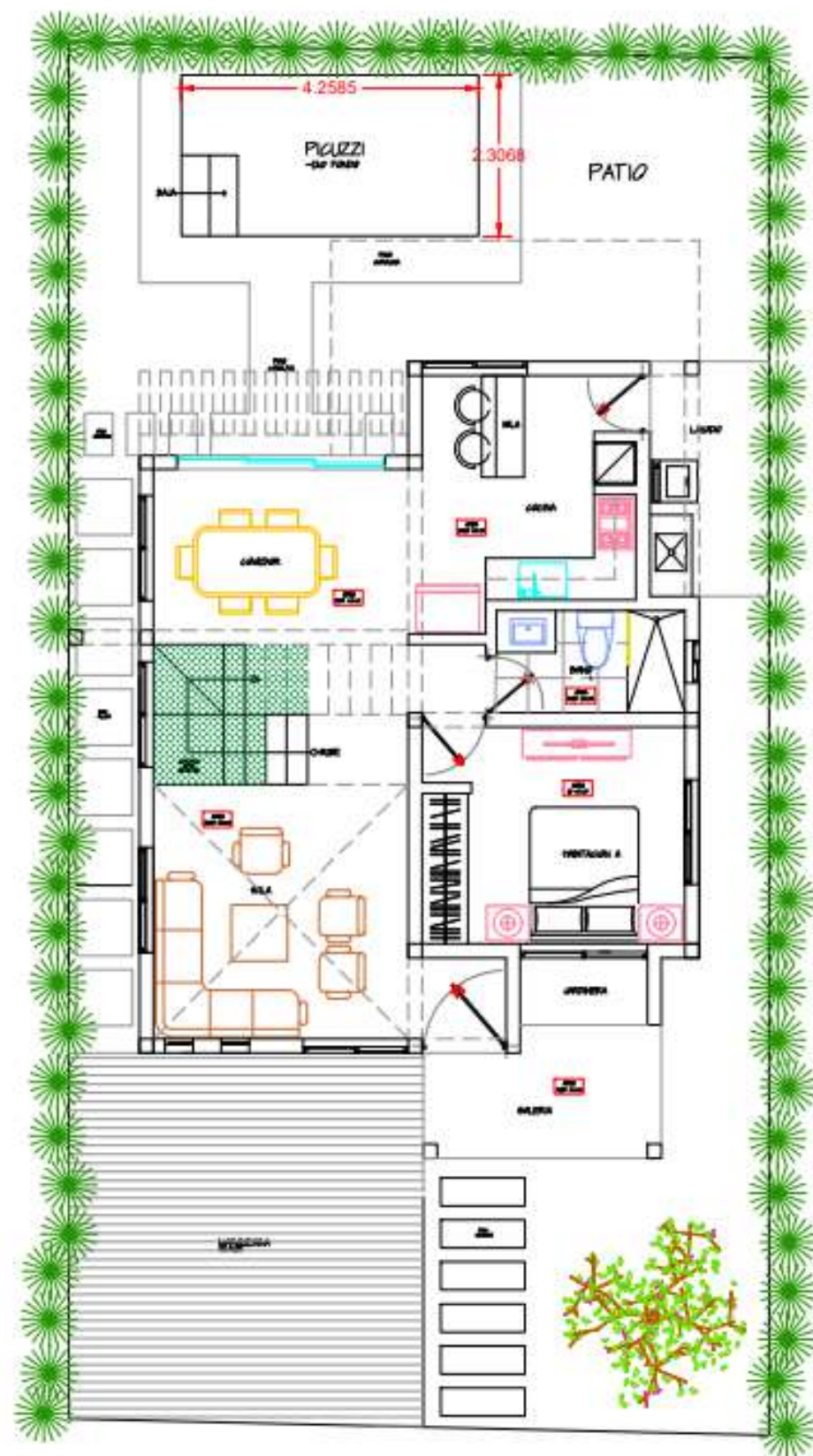
PARKING

2 VEHICLES

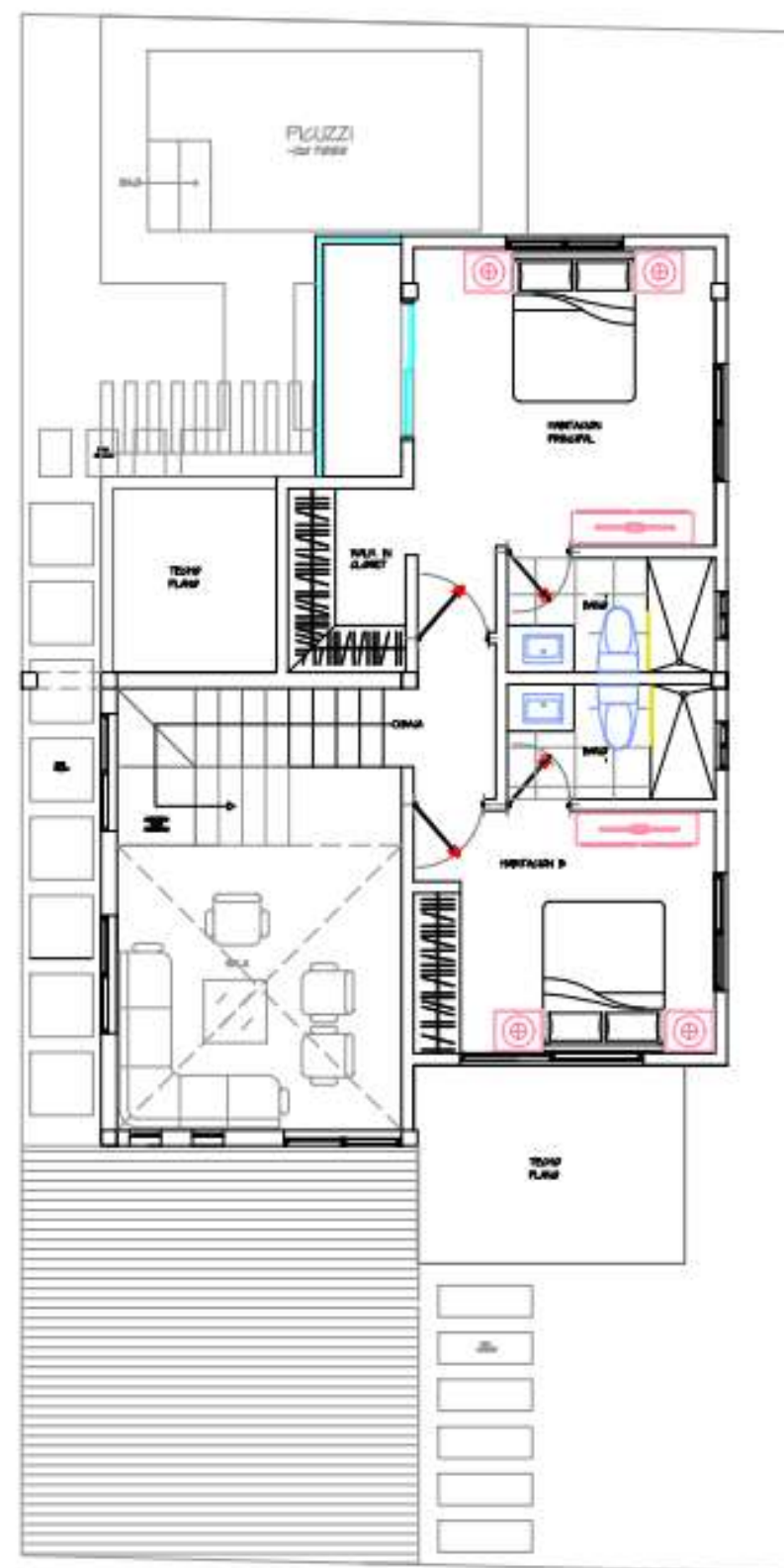




STARTING AT
99,000 USD



PLANTA ARQUITECTONICA DE CONJUNTO
1er NIVEL
TOTAL DE AREA
78
mts 2



PLANTA ARQUITECTONICA
2do NIVEL
TOTAL DE AREA
52
mts 2

3 BEDROOMS

2 LEVELS

M2 CONSTRUCTION

130 M2

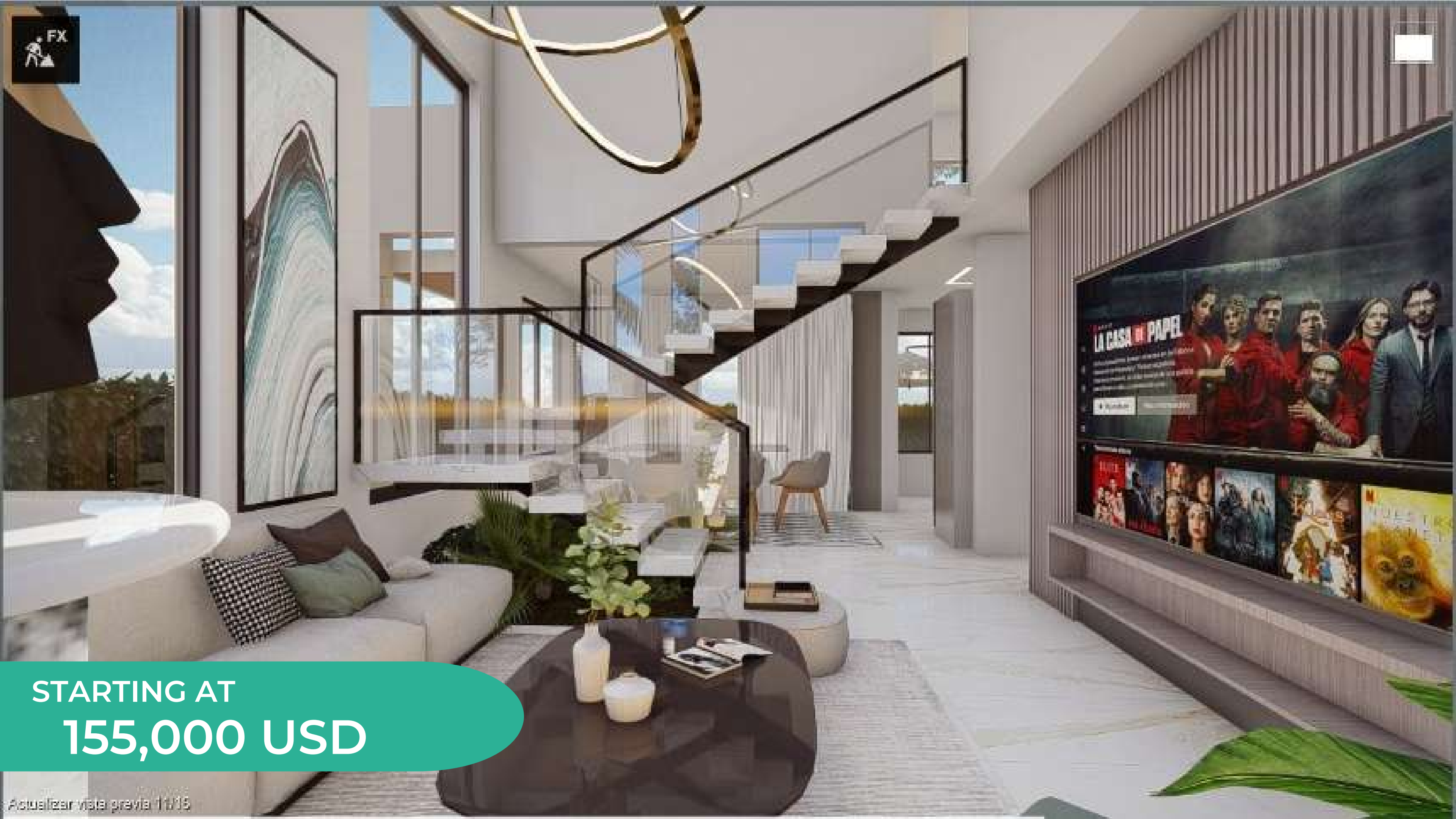
M2 LOT

196.32 M2

PICUZZI

4,50 Mt

PARKING
2 VEHICLES



STARTING AT
155,000 USD

MASTERPLAN



MASTERPLAN

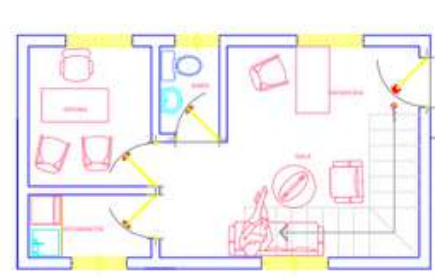


PLANTA DE CONJUNTO
MASTER PLAN 1ER ETAPA



04
C
AREA
INFANTIL

SOLAR
173.20 mts2



DETALLE
AREA INFANTIL
OFICINA

604.08



SOLARES 196.32 M2 APROX.
112 LOTES

57 VILLAS 1 NIVEL
114 HABITACIONES 1 NIVEL
53 VILLAS 2 NIVELES
109 HABITACIONES 2 NIVELES

1 MINIMARKET
39.43 M2

1 GIMNASIO + GAZEBO
67.00 M2 28.40 M2

1 OFICINAS
60 M2

AREA INFANTIL
196.32 M2







PAYMENT PLAN

BOOKING
2,000 USD

20%
DOWNPAYMENT



30%
DURING
CONSTRUCTION



50%
DELIVERY





RESIDENCIAL
LAS PALMERAS
RESIPAL